

Teletics Airborne™

Wireless Ethernet Mesh Solution

PURPOSE BUILT, RUGGED & DEPENDABLE TECHNOLOGY



When Wires Won't Work



Secure Wireless Mesh Setup in Seconds™

Easy Networking for Industrial Applications

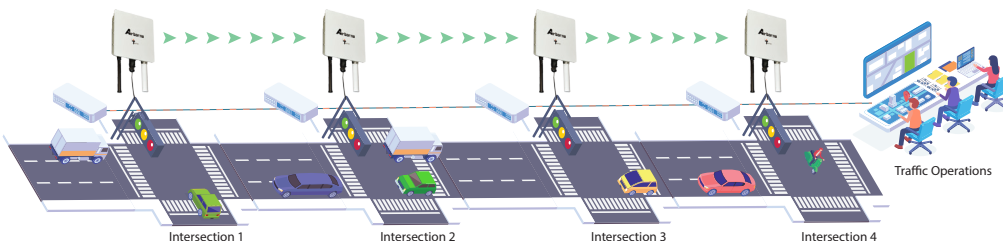
Airborne with Secure Wireless Mesh Setup in Seconds™ lets your field personnel do the install and get back to work quickly. Urban and industrial sites have unique communication challenges that are not served by traditional approaches. Why should a field installer need to read a 50 page installation manual to set up a half dozen radios? Why should security require a complicated setup with dozens of settings and pages of menus? With Teletics Airborne it isn't, it's simple.

If you could do it with Cat5 or Cat6 Ethernet cable, you can do it with our Airborne. Our fully meshed 58 radio technology makes every radio a repeater. There are no home/remote, or base/remote, access points or clients.

Teletics is on thousands of industrial sites around the world with many types of businesses including traffic signals, Oil and Gas drilling rigs, unmanned fuel sites, electrical substations, electrical and gas meters and many more.

When wires won't work, trust Teletics. There is never any digging. You don't need surveys or right of way maps. Just install, plug in, and you're done.

Easy Networking for Traffic Applications



Teletics Airborne

Wireless Ethernet Mesh

Airborne Ethernet Mesh Advantage

- Meshing Technology. Self adapting network where each radio is a repeater.
- Simple installation, Plug & Play.
- Urban tough – exceptional rugged products.
- Up to 80 Mbps throughput.
- Up to 20 radios per site.
- No programming experience needed! Radios simply get numbers 11 thru 30.
- Simple Visual signal strength diagnostics runs on any windows laptop.
- No networking experience needed! System operates like a network switch.
- Works with VoIP, Security Cameras, IoT systems, and any kind of internet access.
- Fully secure – out of the box.
- Ideal for industrial sites
- No cables and trenching of roads.
- Ideal for outdoor wireless deployments.
- All components needed for installation are in the box!

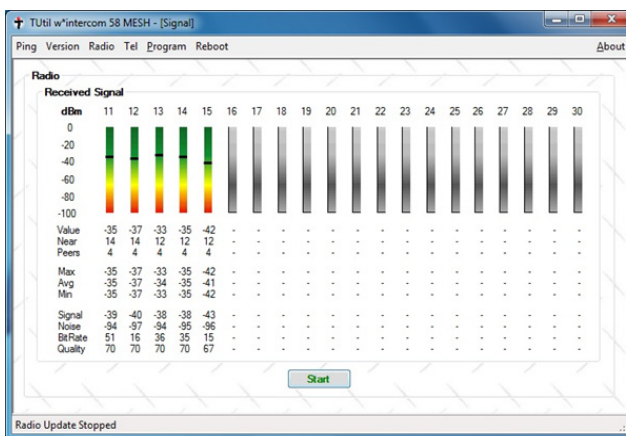
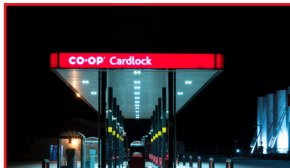
Wireless Ethernet Mesh

Applications

Need Internet/VoIP but cannot trench cable?

Airborne is ideal for sites such as:

- Construction sites
- Security phone applications
- Between buildings and across parking lots
- For remote metering applications
- Recreational properties
- Cardlock or unmanned fuelling islands



Simple Visual signal strength diagnostics runs on any windows laptop.

Maximum Radios per Site	20
Ethernet Port	One Ethernet port RJ45 100-BaseT
Ethernet speed (true throughput)	80 Mbps Meshing
Operating Temperature	-35°F to 120°F or -35°C to 40°C
Power Requirement	+24VDC PoE (injector and international adapter included)
Weatherproofing	Radio & antenna are integrated into one unit, 1P65 rating
Radio Type	5.8 GHz DSSS License Free with 256 bit AES digital encryption
Maximum Range	5km / 3.5 mile range with integrated Omni antennas
Radio Output Power	500mW / +26dBm
Radio Sensitivity	-89 dBm @10 -5BER
Mounting brackets	J-Mounts / Brackets / U-Bolts mounting hardware included
Dimensions / Shipping weight	14.75" (including antenna height) x 8.75 x 2.5 inches (34.5cm x 22cm x 6.4cm) / 11 lbs (5 kg)
Warranty	One year factory warranty

Distributed by: