

Airborne High Performance MESH/ WiFi

Wireless Ethernet Mesh Backhaul + WiFi



DATASHEET

Easy Networking for Industrial Sites

If you could do it with Cat5 or Cat6 Ethernet cable, you can do it with Airborne. Our fully meshed 58 radio technology makes every radio a repeater. There are no home/remote, or base/remote, access points or clients. With the built-in WiFi, the Mesh network acts as the backhaul for your 2.4GHz WiFi network.

Superior Local WiFi Access

Our WiFi covers a much wider range and distance than typical WiFi access points. Super for Outdoor industrial use where you need increased range versus standard indoor WiFi routers. Improve your WiFi range outdoors with the strongest WiFi possible.

Higher Power Output = Stronger Signal

Our power output is as much as hundreds of times more powerful than our competitors, and still legal for unlicensed use! Cover your entire outdoor compound or facility with WiFi, and bring your IP video cameras as well! Each location gets MESH backhaul to the rest, and an Ethernet port.

Factory-Preconfigured for Setup in Seconds

These Airborne systems can be factory preconfigured with OEM settings to allow your field staff extremely efficient installation. Cut your field deployment times by hours per site.

Cloud-based Management

Cloud based Management coming soon with Teletics Harness (optional), allows much more efficient support and programming changes if needed, and can centralize your diagnostic and support functions for all your sites. See sites with problems before anyone notices, update firmware, reboot, and more!



Airborne 58

- Meshing Technology. Self adapting network where each radio is a repeater
- WiFi Access Point at each radio
- Up to 80 Mbps throughput backhaul
- No programming experience needed!
- Simple Visual signal strength diagnostics runs on any windows laptop
- No networking experience needed! System operates like a network switch.
- Works with VoIP, Security Cameras, IoT systems, and any kind of internet access.
- Fully secure – out of the box.
- All components needed for installation are in the box!

**Custom programming available.
Ask your Teletics representative.**

When Wires Won't Work™

Who can use Airborne?

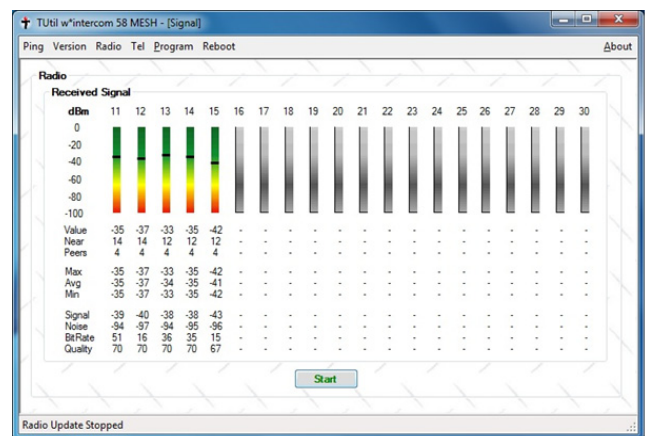
Need Internet/ VoIP but cannot trench cable?
Airborne is ideal for sites such as:

- Construction sites
- Security phone applications
- Between buildings and across parking lots
- For remote metering applications
- Recreational properties
- Cardlock or unmanned fuelling islands



“ Teletics’ technical support has been a delight to work with. They helped us with any questions we had with our install & made certain that our customer was happy. ”

Chris Elton, Advanced Telecommunications & Cabling



Simple Visual signal strength diagnostics runs on any windows laptop

Airborne MESH/WiFi Specifications

WiFi Specifications	2.4GHz 802.11 bgn
Ethernet Port	One Ethernet port RJ45 100-BaseT
Ethernet speed (true throughput)	80 Mbps Meshing
Operating Temperature	-35°F to 120°F or -35°C to 40°C
Power Requirement	+24VDC PoE (injector and international adapter included)
Weatherproofing	Radio & antenna are integrated into one unit, IP65 rating
Radio Type	5.8 GHz DSSS License Free with 256 bit AES digital encryption
Maximum Range	5km / 3.5 mile range with integrated Omni antennas
Radio Output Power	500mW / +26dBm
Radio Sensitivity	-89 dBm @10 -5BER
Mounting brackets	J-Mounts / Brackets / U-Bolts mounting hardware included
Dimensions	14.75" (including antenna height) x 8.75 x 2.5 inches (34.5cm x 22cm x 6.4cm)
Shipping weight	11 lbs (5 kg)
Warranty	One year factory warranty.