



# TUtil ZipLine 24

**Programming and Configuration  
software Utility**

**Version 1.7.0.0**

**Revised 4 APR 2011**

**Installation and operation Manual**

## **Technical Support**

Support can be obtained from your Teletics distributor, or by calling Teletics Technical Support at:

**916 947 7444**

## **Computer operating system requirements**

TUtil ZipLine 24 software has been tested on computers using the following operating systems:

Microsoft Windows XP with Service Pack 2 or above.

Microsoft Vista operating system requires turning off IPV6 see page 11 for details.

Windows 7 is not fully supported at this time.


## **Useful software utilities**

The use of a Wi-Fi scanning tool is recommended to eliminate or reduce interference caused by other wireless systems near the installation site.

A program called Insider is a Free download; which provides information on both 2.4 and 5.8 GHZ Wi-Fi bands channel usage. The following is a link to the Insider download site:

<http://www.metageek.net/products/insider/>

## **Important Software notes:**

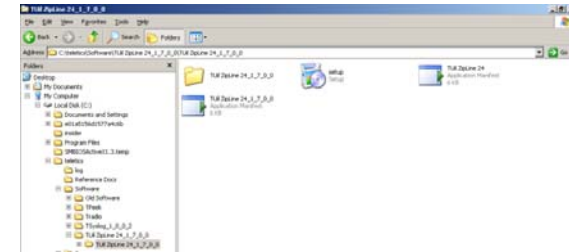
 Always exit the TUtil ZipLine software before disconnecting or powering down a system or unit being tested to maintain your computers network connection settings.

## Contents

Technical Support.....	2
Computer Operating System Requirements .....	2
Useful Software Utilities .....	2
Important Software Notes .....	2
Getting and Installing the Software .....	4
The Interrogate Option .....	5
The TTemp Option.....	6
The Program Option .....	7
The Settings Option.....	9
The Upgrade Option .....	10
Windows Vista turning off Internet Protocol Version 6 (TCP/IPv6).....	11

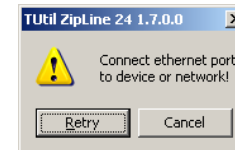
## Getting and Installing the Software

The TUtil software is available for download at the following site: <ftp://70.72.74.234/>. Select the file TUil ZipLine 24\_#\_#\_#\_# copy this file and paste it to a folder such as C:\Teletics. Open the zipped file which should now contain the files as shown below.



Make sure that your computer is connected to a working internet connection or to one of the two ZipLine Ethernet connections.

⚠ Note that this window will also be displayed each time the software is started if the computer is not connected to the ZipLine Ethernet connection or the system is not powered up.

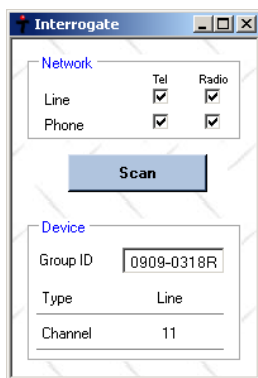


When the installation process is complete the TUil software will start with the main window as shown below. This window will also be display each time the TUil software is started.



The remainder of this manual will describe the TUtil options and its use in installing and setting up a ZipLine system.

### The Interrogate option

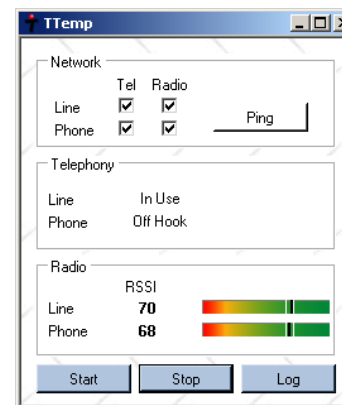


Press the Scan button and the four check marks should appear as the software “pings” the system. If one or more of the boxes aren’t checked verify that each ZipLine unit or radio is plugged in and getting power. Once all the boxes are checked click either the line or phone “Tel” check marks to display the Device information of the system.

The Group ID (as shown above) is the serial number of the system or any 30 digit string of your choice. It is important that both units in a ZipLine system be programmed with identical Group IDs or the system will not function. The Type will indicate the source of the information being displayed and lastly the Channel indicates the radio channel that the system is operating on.

It is a good practice to record the Group ID at this point as it is a required entry during the programming process.

### The TTemp option



In the Network section click the Ping button and the check marks will appear as with the Interrogate screen. Tel and Radio refer to the hardware sections of each unit and the lack of a check mark could indicate a problem with that unit.


The Telephony section displays the status of the Line unit connected to the POTS line and the Phone displays the status of the Phone unit which is connected to Phone, FAX or Modem. Note this section may be intermittent due to a software issue.

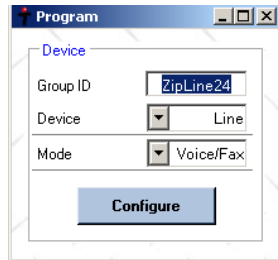
The Radio section displays the RSSI (Receive Signal Strength Indicator) of each ZipLine unit in the system. The RSSI is an indicator of how well each unit is receiving the other unit and is very useful in aligning the units during installation. To activate this section press the Start button and

observe the RSSI readings. The readings shown above are from a unit in our shop that is working and similar readings at other locations have been proven provide reliable system operation.

Adjust each antenna as required and when finished press the Stop button to end the RSSI readings and exit then section of the software.

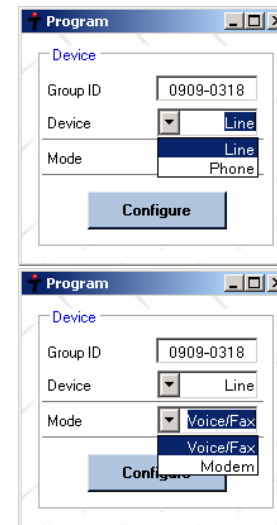
### The Program Option

 The programming process should only be done at the direction of Teletics Technical Support.



Note: The programming process may only be done with one unit powered up at a time and the unit must be connected to the computer with an RJ45 cable.

Enter the Group ID (shown is the system serial number (###-###)); however any combination of letters or numbers not to exceed 30 characters in length are acceptable.

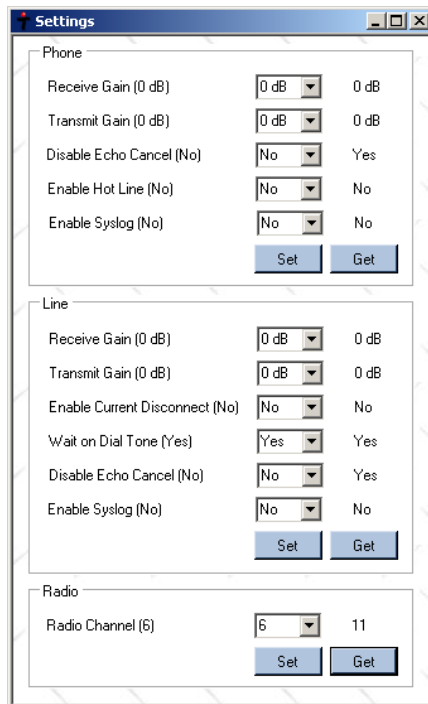


Select the Device (remember that the Line device has a white gland and the Phone unit has two black glands) and Mode from their respective pull down menus then click the Configure button to begin the programming process. A progress window will appear during the process followed by a Done window when the process is completed. Shut down the TUtil software and power down this unit before moving to the other unit of the system.

Complete the above on the remaining unit and when complete; power up the system to test operation or continue testing.

### The Settings Option

⚠ Changes to the system settings other than the Radio Channel should only be done at the direction of Teletics Technical Support.



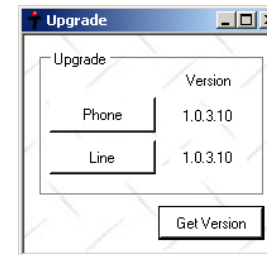
In the Phone and Line section of the window the settings shown in ( ) are default entries for Voice/Fax operation and those shown and those shown

to the right and above the Get buttons are the default entries for Modem operation.

The ZipLine Radio Channel may be changed due to other Wi-Fi systems in the area and is done by selecting the desired channel from the pull down menu and clicking the Set button. Use the Get button to confirm that the change has been made.

For best operation select a channel at least five channels above or below any other channels in use. In practice the only clear channel in the 2.4 GHZ band are 1,6,11.

### The Upgrade Option



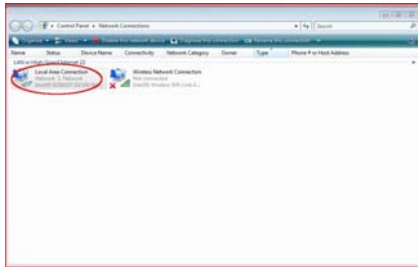
By selecting the Get Version button the program will determine the firmware version of the hardware in the ZipLine system. The current Version as of the date is shown in the above.

If the firmware version is current clicking the Phone or Line button will only result in a display confirming the firmware is current.

If the firmware requires updating proceed as with the program option with only one unit powered up at a time. Once the units firmware is upgraded; program the unit as described earlier in this manual.

### Turning off IPV6 in Windows Vista

From the Start button select Control Panel and then select Network Connections to display the screen below.



Right the Local Area Connection icon and from the menu select Properties to display the Local Area Connections Properties as shown on the following page.

Clear the check mark next to Internet Protocol Version 6 (TCP/IPv6) as shown below and select OK.

