

# Teletics ZipLine™

Wireless Ethernet Solution

Rapid Deployment, Low Cost, Phone/Data Line



## When Wires Won't Work

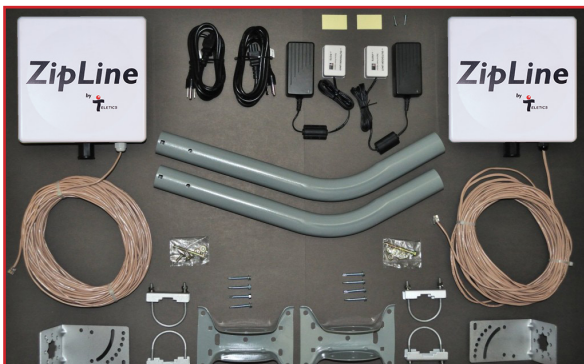


**The Fastest Link Between Two Points**  
ZipLine Ethernet is a wireless bridge that provides a 170Mbps Ethernet connection.

ZipLine is the fastest, least expensive way to get Ethernet connectivity at a true 170Mbps between two locations. In the past, if you needed Ethernet/LAN Connectivity at a nearby location, you had to either trench cable or call the phone company.

With the Teletics ZipLine you can **provide high speed Ethernet to another building, in under two hours, and at a fraction of the cost of trenching.**

**There is never any digging. You don't need surveys or right of way maps. Just point, plug in, and you're done.**



**Zipline is Fast and Easy to Install - Just Plug and Go!**  
Everything you need is shipped when you order Zipline.

## Teletics Zipline

### Wireless Bridge

### The ZipLine Ethernet Advantage

#### No Trenching

- Install without licenses
- Install without a survey or right of way map
- Ideal for temporary or permanent installations
- GigE connection, any time, any where
- Connect to the Internet, LANs and/ or VoIP

#### Fast & Easy Installation

- Everything is included
- Can be installed in under 2 hours
- No special radio skills needed
- Software is pre-programmed
- Outdoor radio is complete unit
- No radio cables or tools needed

#### Secure

- 256 bit WPA-PSK (AES) encryption
- System is unique and secure

#### Unlicensed Radio Technology

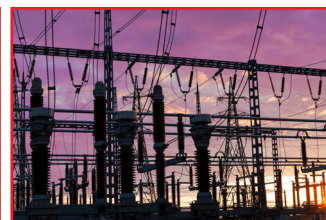
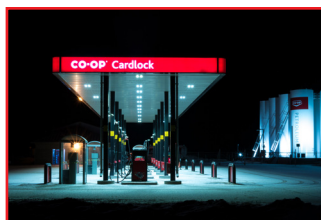
- No special licenses required

# Wireless Ethernet Solution

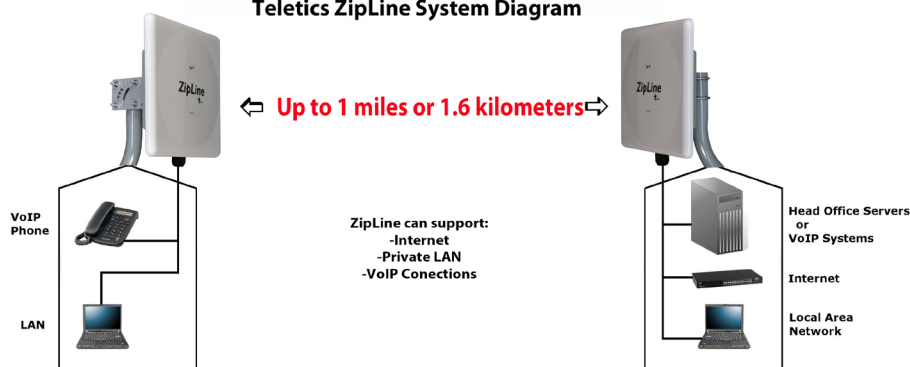
## Applications

Zipline can be used to provide up to 2 phone lines plus Ethernet for a wide variety of applications including:

- Provide a phone at a remote fueling station so users can pay with their fuel card.
- At an electrical substation.
- On construction sites that are temporary, provide phone and Internet.
- For security phone applications, for example on a campus.
- Between buildings and across parking lots.
- For remote metering applications.
- On recreational properties, including public beaches.
- On golf courses, between buildings
- On farms, between buildings.
- At airports to connect fuel pumps without digging up tarmac.



**Teletics Zipline System Diagram**



Range	Up to 1 mile or 1.6 kilometers
Ethernet Port	One GigE port
Ethernet speed (true throughput)	170 Mbps actual sustainable throughput
Operating Temperature	-40°F to 145°F or -40°C to 60°C
Power Requirement	19W maximum, 10W typical (wall adapter included)
Weatherproofing	Radio & antenna are integrated into one unit, 1P65 rating
Radio Type	5.8 GHz DSSS License Free; 256 bit WPA-PSK (AES) digital encryption
Radio Power	+40 dBm (adjustable)
Radio Sensitivity	-80 dBm @10 -5BER
Mounting brackets/ setup software	Included, units are pre-programmed before shipping
Outdoor Unit Size	9" x 9" x 3.5" (23cm x 23cm x 9cm)
Warranty	One year factory warranty.
Shipping weight/ dimensions	23 lbs (10.5kg); 24" x 11" x 8.75" (61cm x 28cm x 22cm)

Distributed by: